

CORPORATE OFFICE
Loyal Textile Mills Ltd.
No.83/41, First Main Road,
R.A.Puram, Chennai - 600 028
Ph: 00 91 44 45120101
Visit us at www.loyaltextiles.com

Cutting Edge Technology
Green Initiatives
Inclusiveness in practiced policies



Loyal
Chanting the
green mantra



Founders



Karumuttu Thiagarajar Chettiar



Karumuttu Manickavasagam Chettiar

Loyal textiles was established in the late 1800's by Sir EDSasson, with imported second hand machines from England as a spinning and weaving mill. In the year 1953, the company was bought over by Karumuttu Thiagarajar Chettiar, a visionary and doyen of the South Indian textile industry. Loyal textiles were reborn as a modern textile mill under his management.

Loyal has several firsts to its credit in introducing technology to Indian textile industry.

In the year 1979, air jet technology was introduced. The first open width continuous dyeing plant was commissioned for knitting in the year 2006 and the first ozone based waste water treatment plant was commissioned in 2007.

In the area of safety clothing, Loyal is the only Indian company to manufacture EN EN EN certified garments for high visibility, flame resistant, explosion proof and electrically conducting garments.

Over the years after it came into Karumuttu's fold, it has grown from a spinning and weaving mill into a fully integrated textile plant with different types of spinning, weaving, knitting, wet processing of both knits and wovens including special finishes and garmenting.

In the year 1996, Loyal made its first overseas venture by buying into a marketing company involved in product design, warehousing and logistics in Italy.

Loyal believes in long term commitment, transparent relationship with all its stake holders.

Loyal is a
USD
225 million
textile
company.



Spinning

Loyal has state-of-the-art spinning plants comprising of the latest machines from international leaders like Reuter, Trutzschler, Murata, Toyota, Schlafhorst and Lakshmi.

Starting from bale pluckers with color contamination checking to link coner with state of the art clearers to eliminate both color and PP contamination.

- Unit One 21,000 spindles with 5,000 spindles compact spinning producing combed counts: above 80's upto 140's tons: 100 per month
- Unit Two 26,000 spindles compact spinning producing combed counts: 40's to 100's tons: 150 per month
- Unit Three 11,000 spindles with 6,000 spindles compact producing combed counts: 40's to 80's tons: 55 per month
- Unit Four 3,000 spindles producing combed mélange yarns in different colour and fibre blend tons: 40 per month
- Unit Five 3,000 spindles producing mélange yarns tons: 40 per month
- Unit Six 1,680 rotors producing open end yarns counts: 6's to 20's tons: 360 per month
- Unit Seven 26,000 spindles combed cotton knitting yarns counts: 24's to 50's tons: 360 per month
- Unit Eight 23,000 spindles producing combed cotton yarns counts: 20's to 40's tons: 360 per month
- Unit Nine 12,700 spindles producing polyester spun and poly cotton yarns for knitting and weaving tons: 200 per month
- Unit Ten 12,000 spindles producing carded fancy and regular yarns counts: 6's to 30's tons: 250 per month
- Unit Eleven 3,400 rotors producing open end yarn from 100% cotton counts: 16's to 30's tons: 450 per month



Wind energy

Loyal produces over 60% of its consumed energy through wind mills. 100% wind energy generation is the corporate goal.



E-manufacturing facilities comprise of state-of-the-art machines like Reuter, Trutzschler, Marzoli, Electrojet, Elite Suessen, LMW machines, KTTM auto doff spinning machines, Toyota ring spinning with multi count, multi twist and slub attachment, Link Coners, Schalfhorst / Savio with contamination clearers.

Cotton is checked through camera based contamination eliminators installed in blow room with polypropylene checking at two levels before feeding into cards.

Twisting department consists of:

Murata and Peas Metler parallel winding machines. 60 TFO machines. 160 drums RITE gassing machines and 720 drums of winding machines. Xorella steam setting machines to condition folded yarns from 2/10's to 2/140's gassed.



The green belt

Present green cover is 52 acres and 2,942 trees. Efforts to keep adding acreage under green cover.



Weaving

Weaving preparatory consists of Benninger warping and sizing.
4 warping machines and 3 sizing machines besides one sectional warping machine.

Loyal has wide width air jet looms, narrow width air jet looms and wide width rapier looms with dobbies, twin beam and jacquards.

Loyal produces nearly 100,000 meters of fabrics per day in width from 160 cms to 330 cms in count range from 6's to 140's including very densely woven fabrics.



Compost manure

Cows and oxen live in the campus of Loyal Mills providing gobar gas, vermicompost, urine based pesticides and disinfectants besides milk, fed with natural food and no growth hormone.



Quality

Quality control at Loyal begins at the ginnery. Loyal's cotton selectors choose the gins from where Loyal buys its cotton.

100% of the cotton is tested using HVI instruments and issued for mizing using a balem management system which ensures a narrow band of average yellowness and micronaire values. Other instruments in the lab are AFIS, yarn and preparatory slivers evenness tester, UsterClassimat, Tensorapid strength tester from Premier.

Loyal uses a combination of cottons from Egypt, USA, Israel and India to produce yarns for different customer specifications.

100% of both knit and woven cloths grey, as well as dyed are inspected before packing.

Knitting

Knitting department consists of knitting machines in diameter from 26" to 36" in gauge from 18GG to 36GG from Mayer and Cie, Terrot, Panylung and Unitex machines. Most of them are equipped to produce over 100 kg per roll Single Jersey, Interlocks, Ribs, 3Thread Fleece, Piquepolo etc.

Open width knitting machines to knit cotton/lycra fabrics with all feeders lycra.
Flat knitting machines to produce collars and cuffs.
The knitting capacity is 1,000 tons per month.

All yarns used in knitting are Xorella conditioned waxed yarns cleared using color and PP contamination clearers.

Vermiculture

Using two kinds of well known species of Earthworm (Eisenia Fetida and Eudrelis eugina) vermicompose preparation is made through trench method .By this Loyal improves microbial population and nitrogen fixing bacteria.



Dye House

The dye house has two sections:

The woven fabric dye house consists of Osthoff gassing, Kuster continuous bleaching, Kusters mercerising machine, Monfort E-Control dyeing machine, Kusters continuous washing machine, Bruckner Stenters with coating attachments and a Sanforising machine besides Ceramic and aluminium wire brushing and steel wire raising machines.

The knit dyeing unit consists of Erbatech continuous bleaching, Monfort relax dryer, Benninger padder, Erbatech washing machine, Bruckner stenter compacting machine. Soft flow machines from Scalvos for exhaust and polyester blends dyeing.

The lab consists of Barco siedo colour master, Mathis E-control, stenter, different lab padders, exhaust dyeing machines, tumble dryers, washing machines etc.

Waste water treatment

Waste water produced in the dye house is one of the lowest in the industry per kilo of fabric processed. This water is treated using bacteria and Ozone to produce the least amount of solid waste.



Garments Units

Garments division has Gerber automatic spreading and cutting machines, Juki Brother and Special purpose machines including automatic pocket setters, welt pocket makers, profile stitching machines, collar making and stitching machines, belt loop attaching machines etc.

All machines have underbed trimmers and a computer stitch control. 10,000 complex garments with multiple pockets and design features can be made per day.

Home Textiles



Loyal has an exclusive division for household textiles. Its core business is designing and marketing bed linen, bathing items and upholstery like flat fitted pillow cases, shams, duvets, comfort shells with and without down proof, bed skirts, shower curtains and sofa covers.

Majority of our products are 100% cotton and have high thread counts. We concentrate on traditional plains, twills, drills, satins, sateens, yarn dyed stripes, self stripes, dobbies, plaids, chambrays and jacquards.

We have weaving facilities upto 140 inches and can give a maximum finished width of 114 inches.

Salient features of our products are good fit and colour fastness for all shades and the fact that we do 100% inspection of all our shipments.

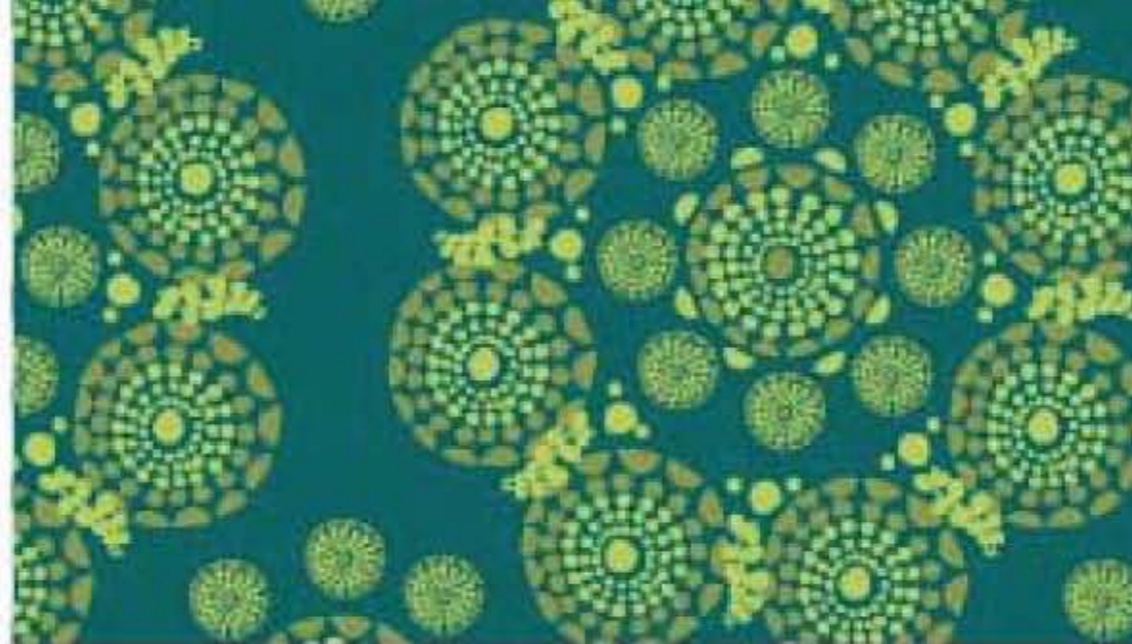
Rain water harvesting

Loyal's spinning and weaving units get 100 % of their water requirement from:

- Municipal waste water (grey water) treated at Loyal's treatment plants.
- Through rain water harvesting, volume in excess of 60 million litres is collected in a pond.

The huge water bodies together with a dense cultivation of thorny bushes interspaced with fruit trees has become the home to over 500 Peacocks, the national bird of India besides several other species.





Organic Textiles

Loyal strongly believes that the organic way of cotton cultivation and eco friendly ways of converting the raw material into finished product is the only sustainable way.

Loyal strongly believes that we have taken the universe on loan from the previous generation to be handed over to the next generation and it also believes in being responsible to improve whatever it has obtained.

Loyal is certified by "Control Union World Group" (formerly known as "SKAL International") to supply organic products under GOTS.

All the plants - spinning, weaving, knitting, dyeing & finishing and garmenting are GOTS certified for processing organic cotton.

Carbon emission

Loyal is working towards becoming a net carbon dioxide consumer and not an emitter.

- Loyal's energy requirements are being increasingly met by its own wind farms. Loyal's fire wood requirements too are being increasingly met from its own captive firewood plantations.

Loyal's corporate office has followed all the recommendations of the Green Building code and is under certification..



Certification Standard Awards

Certification

- Certified 3 Star Export House
- ISO:9000:2000 Certified
- ISO:14001: EMS Certified
- SCAL Organic Productions MT Certified
- SAB000 Certification underway
- Corporate office under green building (IGBC) certification

Standard

- OAK Tech standards for dyed fabrics
- Bardush standards for European industrial wash
- BS 2576/1986 & ASTM D1424/1996 standards for fabric
- ASTM D5034/ASTM D1424 standards for dyed fabric
- ISO 13934-1/ISO 4074-2 dyed fabric for purpose

Awards

- Bronze trophy for the year 1997-98 for being third largest exporter of cotton fabrics in the country
- Silver trophy for the year 1998-99 for being the second largest exporter of cotton fabrics in the country
- Silver trophy by AEPC for being fourth largest exporter of garments under non-quota category for the year 1999
- Bronze trophy for outstanding export performance in yarn amongst mill exporters from TEXPROCIL for the year 2001-02
- Bronze trophy for the year 2004-2005 for being third largest exporter of cotton fabrics in the country
- Gold Trophy for the year 2006-07 for being the largest exporter of cotton fabrics in the country.



Joint Venture / Overseas Office

Gruppo P&P Loyal s.p.a
Via Valdilocchi, 2-19126
La Spezia, Italy
E mail: info@peployal.it

Loyal Textiles (UK) Ltd.
48, Bessencourt, Holmes Chapel,
Cheshire CW4 7NB, England
E mail: david@loyaltextiles.co.uk

Corporate social responsibility initiatives

As a part of providing an opportunity for young women workforce to improve their living standards and future prospects, graduate degree classes are being conducted for leading them to secure university degree through distance education programmes.



Exports

The major markets for our products are as follows:

Garments	Europe, Switzerland, Middle East and USA
Finished Fabrics	UK, Sri Lanka, Dubai, Europe and USA
Home Textiles	USA, Europe and Japan
Grey Fabrics	USA, Europe, Hong Kong, South Korea, Israel and UK
Yarn	Europe, Japan, Hong Kong, Korea, Australia, Spain, Egypt, Israel, Turkey, Thailand, Taiwan and Bangladesh

Environmental Management system (ISO – 14001)

- Complying with applicable environmental legislations and regulations
- Conserving natural resources through responsible management of energy and water use
- Dyeing of fabrics using extremely water frugal technology and E- control dyeing
- Waste water C.O.D and B.O.D reduced to acceptable levels using a combination of bio tower and aeration tank
- Reducing environmental impacts through reuse, recycle and minimization of waste
- Adopting cost effective measures in the prevention of pollution from our processes
- Motivating and preparing all employees to take personal accountability for protecting the environment
- Planning, implementing and reviewing environmental objectives & targets
- Regularly reviewing and improving our environmental management system



Thiagarajar College of Perceptors



Thiagarajar School of Management

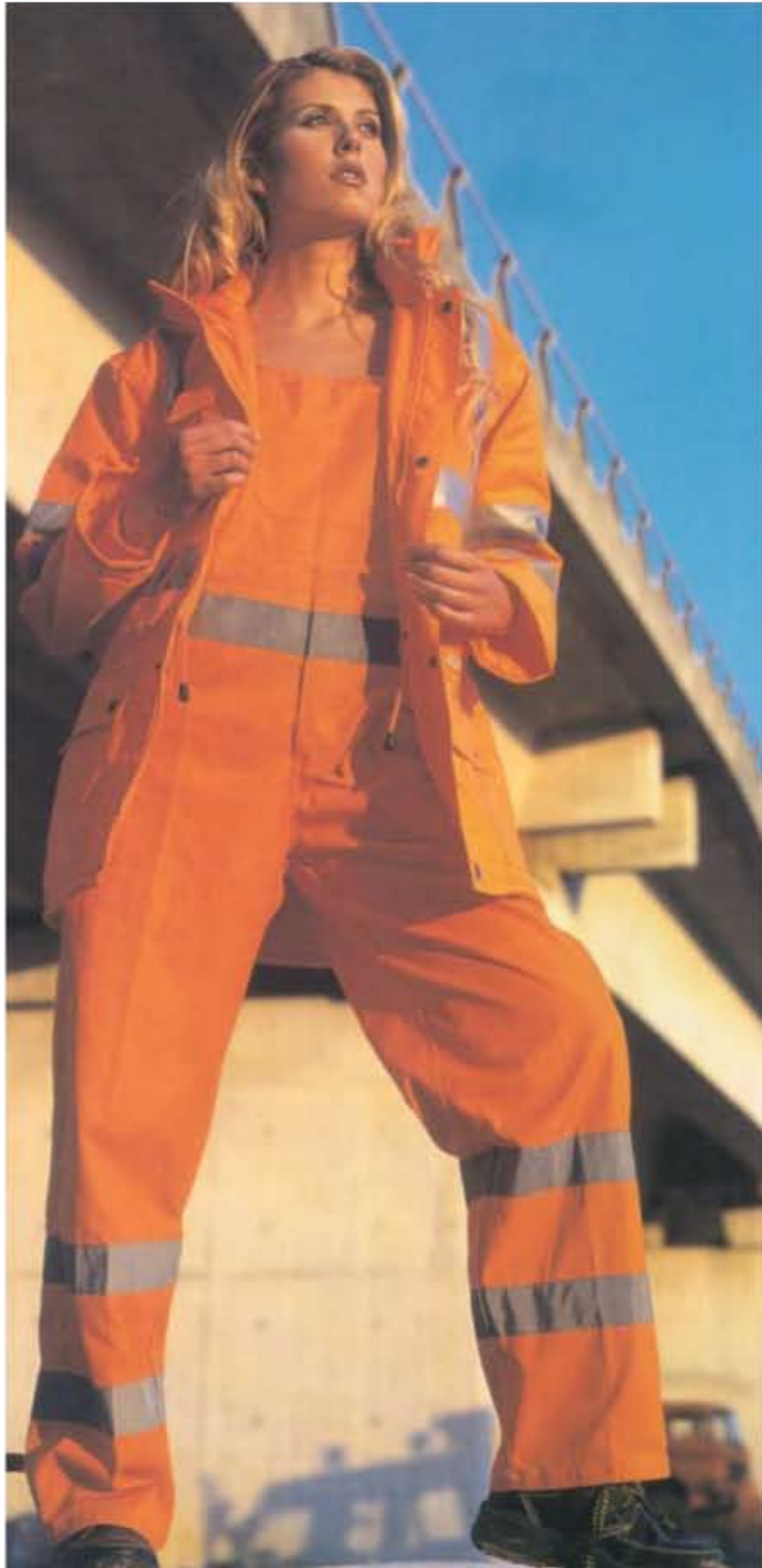
Corporate social responsibility initiatives
 Loyal Textile Mills Group supports charitable trusts, several educational institutions offering quality education from primary level to masters level in Business Management and Computer Application. Around 3,000 students receive a highly subsidised education through these trusts every year.

Persons to be contacted:

Mr Manikam Ramaswami
 Chairman & Managing Director
loyal@loyaltextiles.com

Mr KL Palaniappan
 Senior Vice President
k1p@loyaltextiles.com

Loyal in the world of work wear



Loyal Medical Welfare scheme for villagers

Corporate social responsibility initiatives

Conscious of its obligations to the society, Loyal has taken the initiative to create health awareness by providing health screen and continuous treatment to people living in villages, around its factories, to identify hypertension and diabetics and provide treatment at thier doorsteps for 25,000 people, a life long commitment from Loyal.